

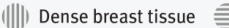
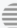
# BREAST DENSITY

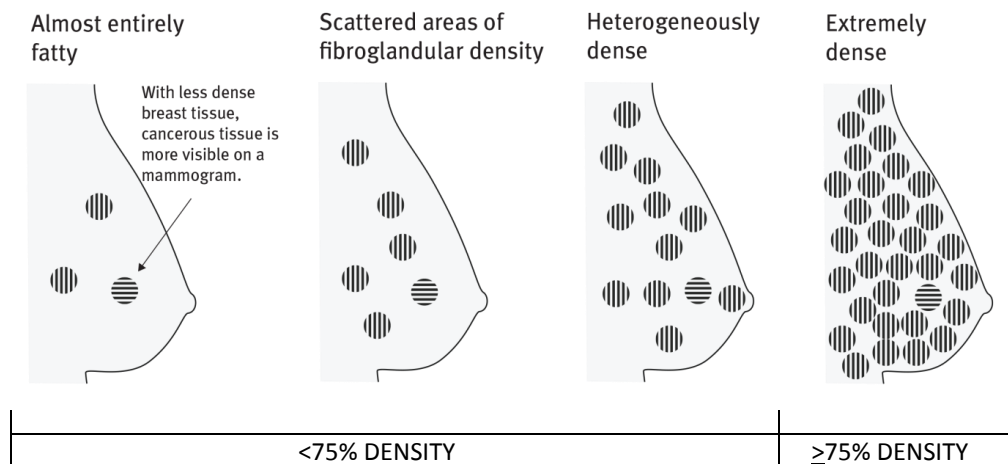
## 1. What is breast density?

Breast density is a term used to describe how breast tissue looks on a mammogram (breast x-ray). Breast density is not related to how your breasts look or feel. When a person has more glandular and fibrous connective tissue than fatty tissue, their breast tissue may be called 'dense.'

A radiologist is a specially trained doctor who looks at medical test images to diagnose and treat disease. A radiologist can tell if you have dense breasts by looking at your mammogram.

USED WITH PERMISSION OF THE BC CANCER AGENCY, 2018

Cancerous tissue can look like dense breast tissue on a mammogram:  Dense breast tissue  Cancerous tissue



If you have dense breasts and are concerned about your risk of developing breast cancer you should discuss your personal risk factors with your healthcare provider.

## 2. How do I find out my breast density?

Breast density is recorded on your BreastCheck mammogram report. These reports categorize the level of density of breast tissue into one of two categories:

- less than 75% dense breast tissue (<75%).
- equal to or greater than 75% dense breast tissue (≥75%) or extremely dense.

To request your report with your breast density, call or email BreastCheck.

If you are concerned about your risk of developing breast cancer, you should discuss your personal risk factors with your healthcare provider.